



Bring Your Designs To Life



Key Winning Features

- ✓ Tremendously improve designers' workflow through multi-displays solution with single card
- ✓ Supporting AMD Eyefinity technology¹ – up to 4 displays
- ✓ Equipped with 2 GB Graphics Memory into Mid-Range segment
- ✓ GeometryBoost technology provides ultra-high geometry performance
- ✓ AMD PowerTune technology delivers reliability and maximizes performance
- ✓ Support 10-bit packed pixel for medical displays
- ✓ AutoDetect technology dynamically optimizes performance for multi-application workflow
- ✓ ISV certifications optimizing for CAD and DCC applications
- ✓ Support industry open standards, Full DirectX[®] 11, OpenGL[®] 4.1 and OpenCL[™] 1.1

^{*}OpenCL 1.1 certification expected

¹ AMD Eyefinity technology works with applications that support non-standard aspect ratios, which is required for panning across multiple displays. To enable more than two displays, additional panels with native DisplayPort connectors, and/or DisplayPort compliant active adapters to convert your monitor's native input to your cards DisplayPort or Mini-DisplayPort connector(s), are required. AMD Eyefinity technology can support up to 6 displays using a single enabled AMD FirePro™ graphics card with Windows Vista or Windows 7 operating systems – the number of displays may vary by board design and you should confirm exact specifications with the applicable manufacturer before purchase. SLS ("Single Large Surface") functionality requires an identical display resolution on all configured displays.

©2011 Advanced Micro Devices, Inc. All rights reserved. AMD, the AMD Arrow logo, CrossFire, FirePro and combinations thereof are trademarks of Advanced Micro Devices, Inc. Microsoft, Windows, Windows Vista, and DirectX are registered trademarks of Microsoft Corporation in the United States and/or other jurisdictions. Other names are for informational purposes only and may be trademarks of their respective owners. OpenCL and the OpenCL logo are trademarks of Apple Inc. used by permission by Khronos. Features, performance and specifications may vary by operating environment and are subject to change without notice.

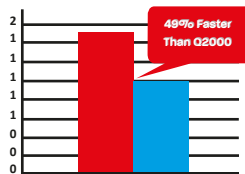
AMD FirePro™ V5900 Professional Graphics Specifications

Model	AMD FirePro™ V5900
Stream Processors	512
Memory Specs.	2.0 GB GDDR5
Memory Bandwidth	64 GB/s
OpenGL Support	4.1
DirectX [®] Support	11
OpenCL [™] Support [#]	1.1
Display Outputs	2 x DisplayPort + Dual-Link DVI
Bus Interface	PCIe x16
Power Consumption	< 75 watts

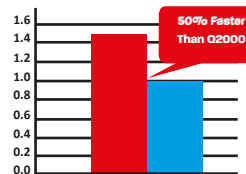
OutStanding Specifications and Performance

Model	AMD FirePro™ V5900	Nvidia Quadro 2000
Stream Processors	512 ✓	192
Memory Size	2.0 GB ✓	1.0 GB
Memory Type	GDDR5	GDDR5
Memory Bandwidth	64 GB/s ✓	41.6 GB/s
DisplayPort Support	1.2 ✓	1.0
Max. Outputs / Card	3 ✓	2
OpenGL Support	4.1 ✓	4.0

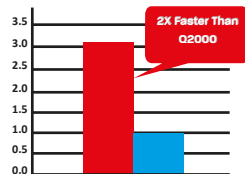
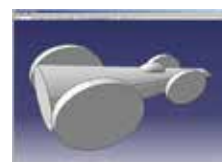
AutoCAD Cadalyst 3D Graphics™



Inventor™ Large Model



CATBench Large Model



Testing based on AMD performance lab

System config: Intel W3680 @ 3.33GHz, Intel X58, 8GB RAM, Win7 Prof 64-bit AMD driver: 8.86 beta

Nvidia driver: 267.79

SPECapc service mark is trade mark of Standard Performance Evaluation Corporation – see SPEC.org