



## Bring Your Designs To Life



### Key Winning Features

- ✓ Quad DisplayPort outputs with single card
- ✓ Tremendously improve designers' workflow through multi-displays solution with single card<sup>1</sup>
- ✓ Supporting AMD Eyefinity technology<sup>1</sup> – up to 4 displays
- ✓ GeometryBoost technology provides ultra-high geometry performance
- ✓ AMD PowerTune technology delivers reliability and maximizes performance
- ✓ Support 10-bit packed pixel for medical displays
- ✓ Support Framelock/Genlock for visualization
- ✓ Stereoscopic 3-pin mini-DIN support (with included expansion bracket)<sup>3</sup>
- ✓ AutoDetect technology dynamically optimizes performance for multi-application workflow
- ✓ ISV certifications optimizing for CAD and DCC applications

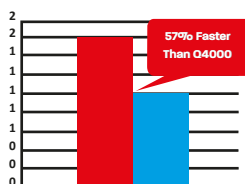
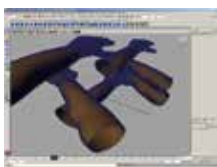
## AMD FirePro™ V7900 Professional Graphics Specifications

Model	AMD FirePro™ V7900
Stream Processors	1280
Memory Specs.	2.0 GB GDDR5
Memory Bandwidth	160 GB/s
OpenGL Support	4.1
DirectX® Support	11
OpenCL™ Support <sup>#</sup>	1.1
Display Outputs	4 x DisplayPort
Bus Interface	PCIe x16
Power Consumption	< 150 watts
Features Support	Genlock/Framelock Stereo 3D <sup>2</sup> AMD CrossFire™ Pro <sup>3</sup>

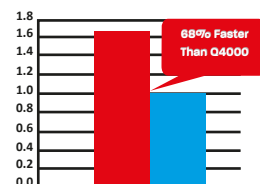
## Outstanding Specifications and Performance

Model	AMD FirePro™ V7900	Nvidia Quadro 4000
Stream Processors	1280	256 ✓
Memory Size	2.0 GB	2.0 GB
Memory Type	GDDR5	GDDR5
Memory Bandwidth	160 GB/s	89.6 GB/s ✓
DisplayPort Support	1.2	1.0 ✓
Max. Outputs / Card	4	2 ✓
Genlock/Framelock	Yes	No ✓
Stereo 3D <sup>2</sup>	Yes	Optional ✓

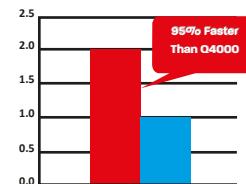
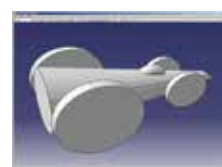
**SPECapc™  
Hand Subtest**



**CATBench  
Medium Model**



**CATBench  
Large Model**



Testing based on AMD performance lab  
System config: Intel W5680 @ 3.33GHz, Intel X58, 8GB RAM, Win7 Prof 64-bit AMD driver: 8.86 beta  
Nvidia driver: 267.79  
SPECapc service mark. Is trade mark of Standard Performance Evaluation Corporation – see SPEC.org

<sup>#</sup>OpenCL 1.1 certification expected

<sup>1</sup> AMD Eyefinity technology works with applications that support non-standard aspect ratios, which is required for panning across multiple displays. To enable more than two displays, additional panels with native DisplayPort connectors, and/or DisplayPort compliant active adapters to convert your monitor's native input to your cards DisplayPort or Mini-DisplayPort connector(s), are required. AMD Eyefinity technology can support up to 6 displays using a single enabled AMD FirePro™ graphics card with Windows Vista or Windows 7 operating systems – the number of displays may vary by board design and you should confirm exact specifications with the applicable manufacturer before purchase. SLS ("Single Large Surface") functionality requires an identical display resolution on all configured displays.

<sup>2</sup> AMD HD3D is a technology designed to enable stereoscopic 3D support in software applications such as Computer Aided Design and Digital Content Creation. Additional hardware (e.g. 3D enabled panels, 3D-enabled glasses/emitter, Blu-ray 3D drive) and/or software (e.g. Blu-ray 3D discs, 3D middleware, software applications) are required for the enablement of stereoscopic 3D. Not all features may be supported on all components or systems - check with your component or system manufacturer for specific model capabilities and supported technologies.

<sup>3</sup> AMD CrossFire™ technology requires an AMD CrossFireX Ready motherboard, an AMD CrossFire™ Bridge Interconnect (for each additional graphics card) and may require a specialized power supply.